



## PERSONALIZE YOUR WALL!

Wall designs are becoming essential, both in renovation and for new constructions, not counting commercial applications. They bring warmth, distinction and nobility while providing a personalized decor.

At Impex, you'll find the latest trends and classics for all your wallcovering needs.

Whether for alternative masonry, concrete products, wood sidings, bricks, glued stones or metal, you will find easy to install products that will embellish both the interior and exterior.

## CONTACT INFORMATION

**CUSTOMER SERVICE**

Toll free: 1-877-973-1732

Email: [info@impexstones.com](mailto:info@impexstones.com)  
Website: [www.impexstones.com](http://www.impexstones.com)



# BRICK VENEER



# BRICK VENEER

IMPEX | [www.impexstones.com](http://www.impexstones.com)



PAINTABLE BRICK



OLD MONTREAL

# BRICK VENEER



AVALANCHE



AVALANCHE



AFRICA

# BRICK VENEER

IMPEX | [www.impexstones.com](http://www.impexstones.com)



KINGSTON



6

OLD QUEBEC

# BRICK VENEER



KINGSTON



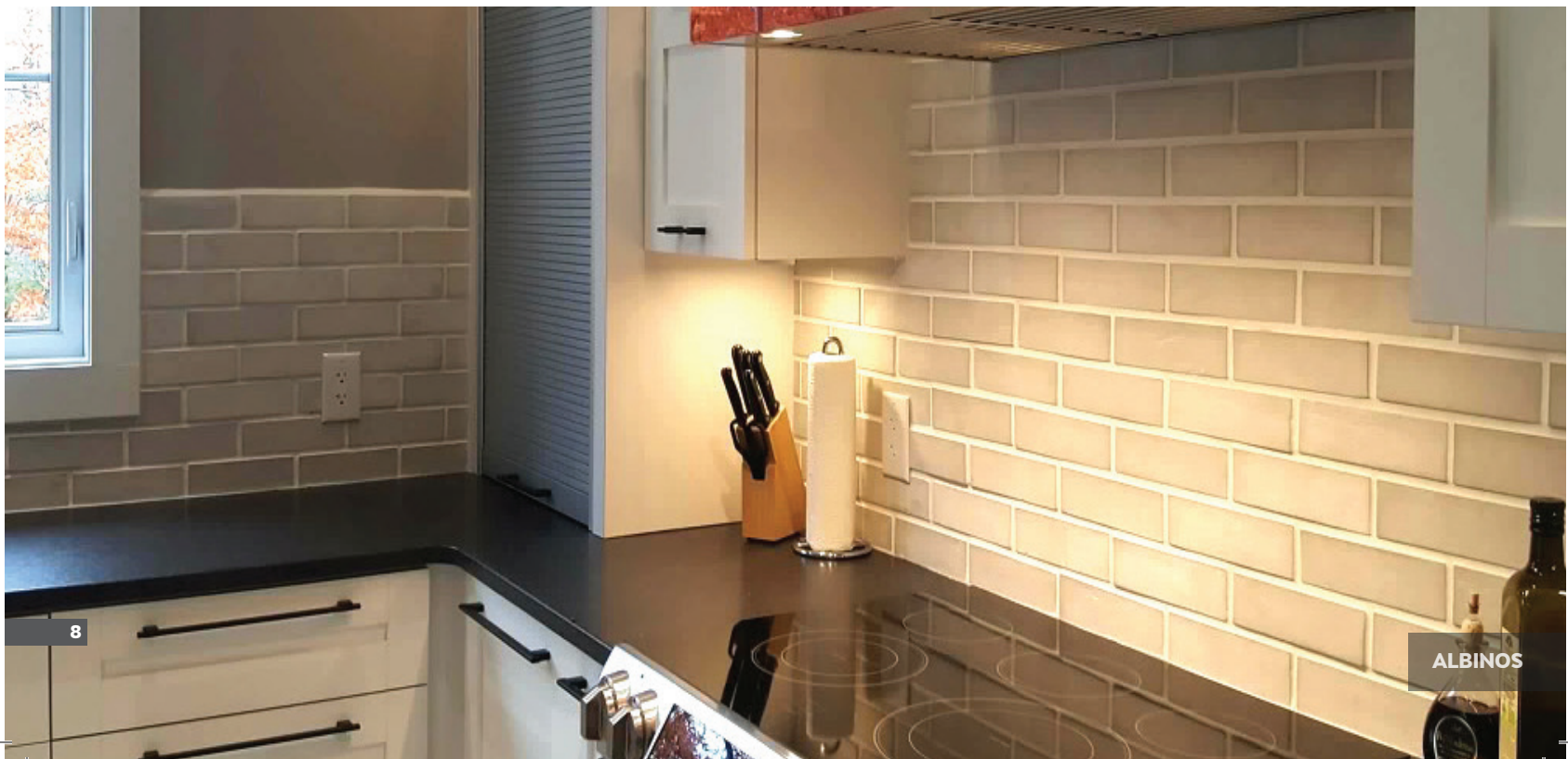
OLD MONTREAL

# BRICK VENEER

IMPEX | [www.impexstones.com](http://www.impexstones.com)



NOCTURN



8

ALBINOS



# BRICK VENEER



OLD BANK



ST-CHARLES

# NATURAL STONES

IMPEX | [www.impexstones.com](http://www.impexstones.com)



CHELSEA



HALIFAX

# NATURAL STONES



ALPINE



SABLON

# NATURAL STONES

IMPEX | [www.impexstones.com](http://www.impexstones.com)



BLACK QUARTZITE



MONT BLANC

# NATURAL STONES



AVORIO



NIAGARA

# NATURAL STONES

IMPEX | [www.impexstones.com](http://www.impexstones.com)



KENORA



ECLIPSE

# NATURAL STONES



HALIFAX



SAVOY

# NATURAL STONES

IMPEX | [www.impexstones.com](http://www.impexstones.com)



KENORA





# NATURAL STONES



TORNADO



TORNADO



TORNADO

# STONE VENEER

IMPEX | [www.impexstones.com](http://www.impexstones.com)



WHITE RIDGE



BEIGE RIDGE

# STONE VENEER



LONDON



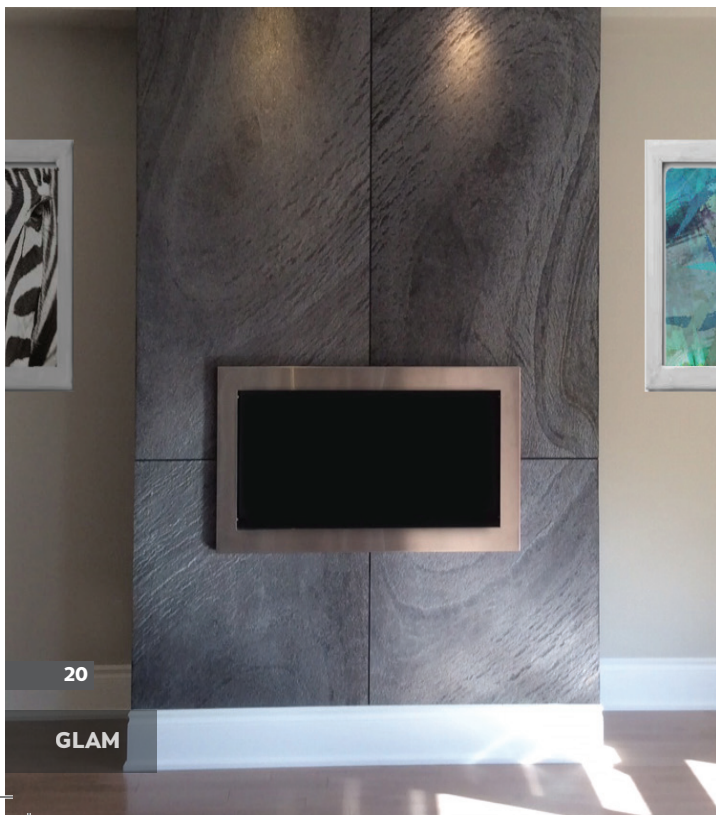
LIVERPOOL

# LAMSTONE

IMPEX | [www.impexstones.com](http://www.impexstones.com)



FIOR



20

GLAM



PALACIO

# LAMSTONE



METAL



JURA



21

TIFFANY

# CONCRETE PRODUCTS

IMPEX | [www.impexstones.com](http://www.impexstones.com)



LUNA



TRINITY

Concrete product

TIFFANY

Lamstone

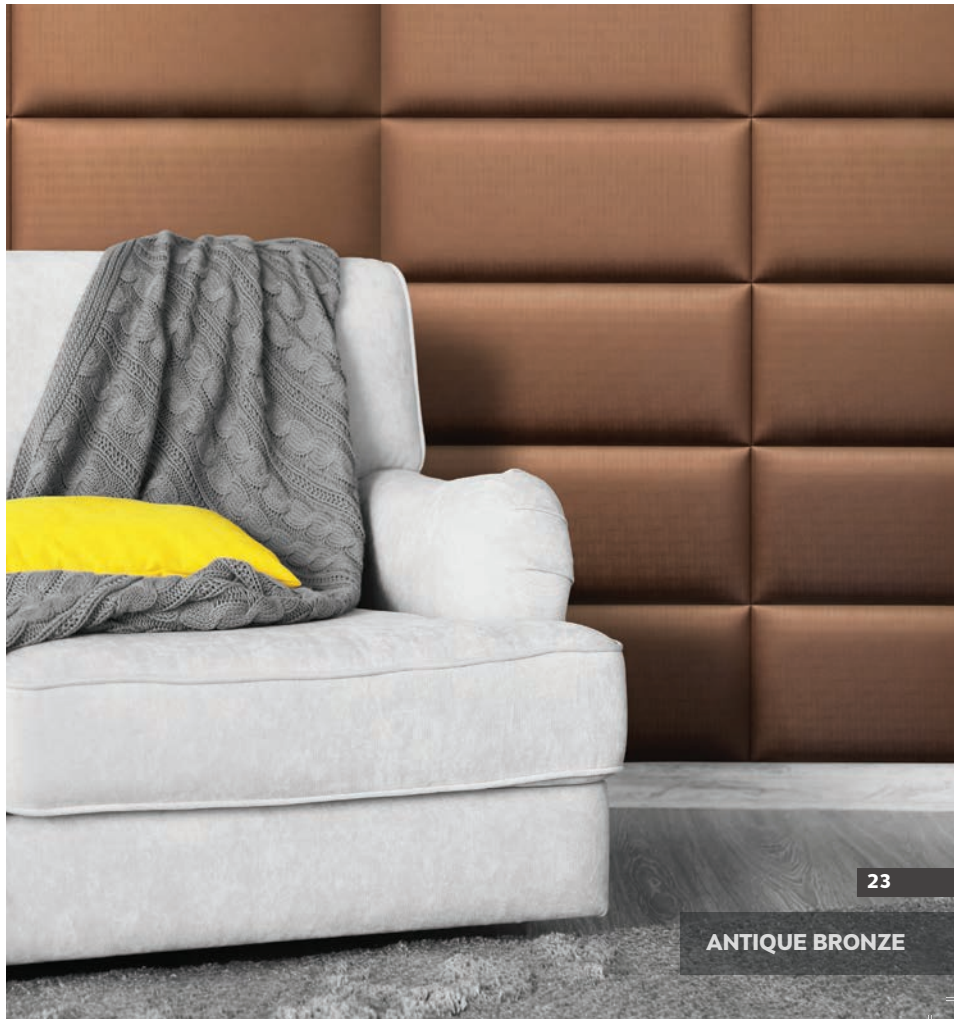
# WALL PANELS



EBONY BLACK



PURE CREAM



ANTIQUÉ BRONZE

# WOOD SIDINGS

IMPEX | [www.impexstones.com](http://www.impexstones.com)



PEARL



24

COPPER



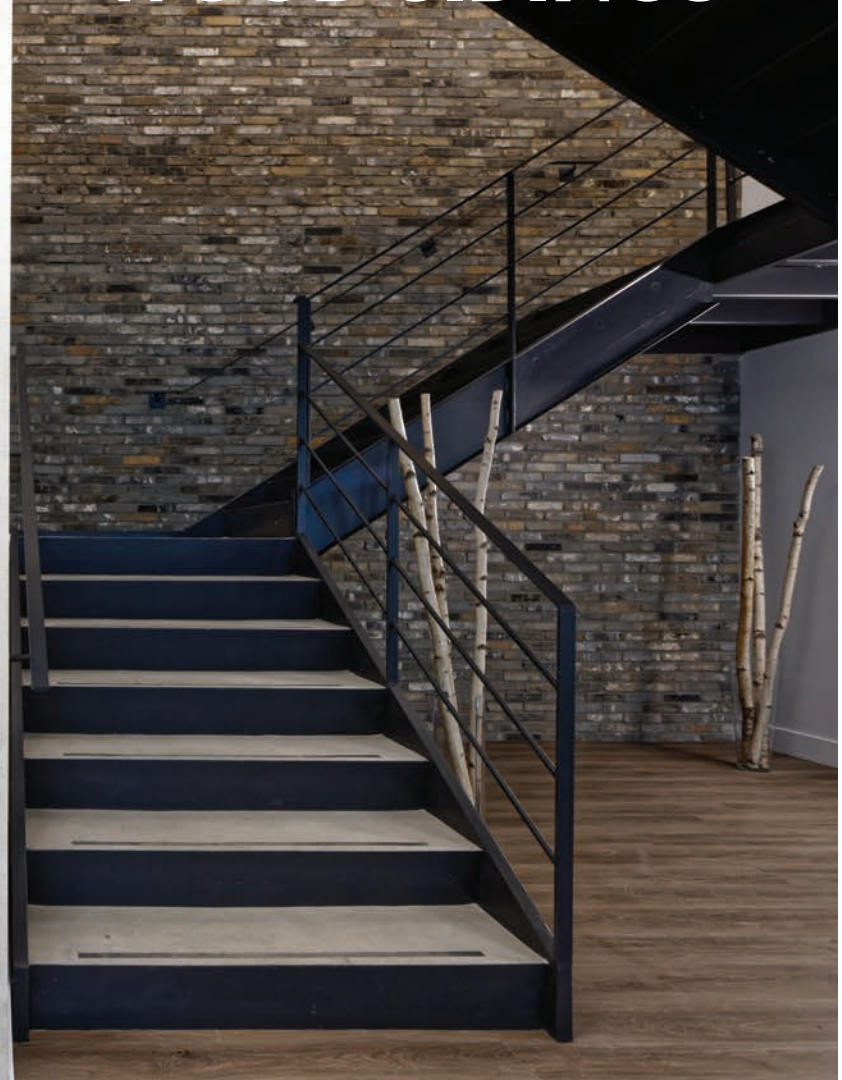
SILVER



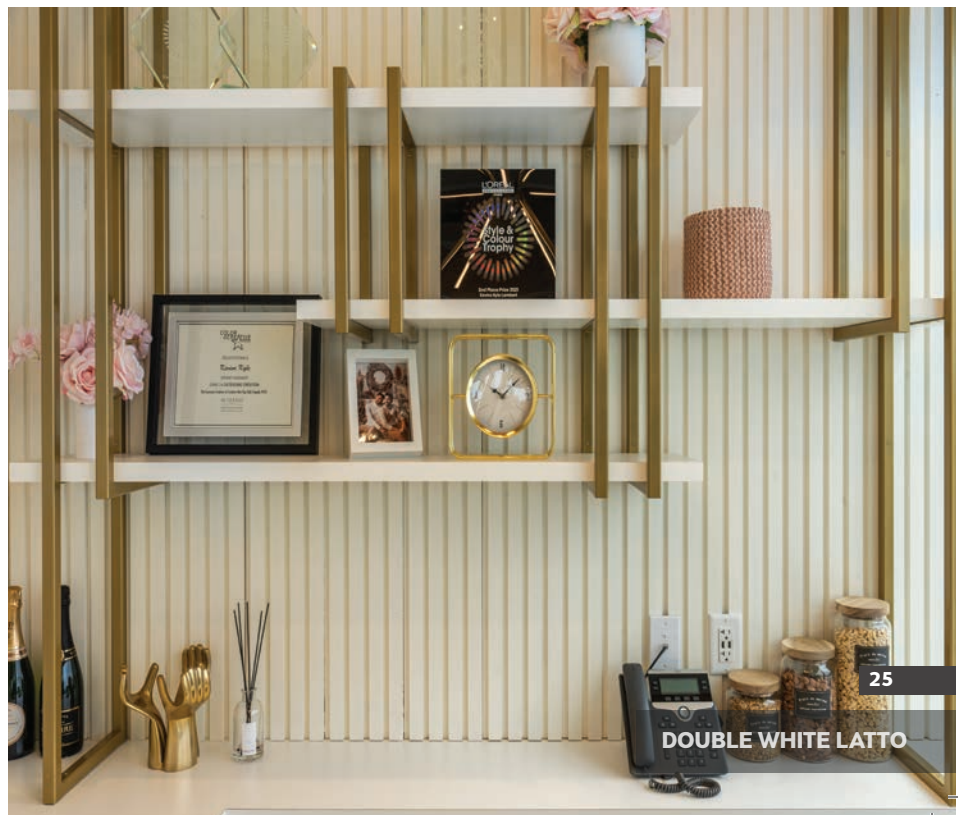
# WOOD SIDINGS



LOUNGE CAMEL



LOUNGE CHROME



DOUBLE WHITE LATTO

# ALTERNATIVE MASONRY

IMPEX | [www.impexstones.com](http://www.impexstones.com)



STRASBOURG



BAHAMAS

# ALTERNATIVE MASONRY



RENAISSANCE



NORWAY

# ALTERNATIVE MASONRY

IMPEX | [www.impexstones.com](http://www.impexstones.com)



RENAISSANCE



RENAISSANCE

# ALTERNATIVE MASONRY



MADRID



FRANKFORT



FRANKFORT

# ALTERNATIVE MASONRY

IMPEX | [www.impexstones.com](http://www.impexstones.com)



RENAISSANCE

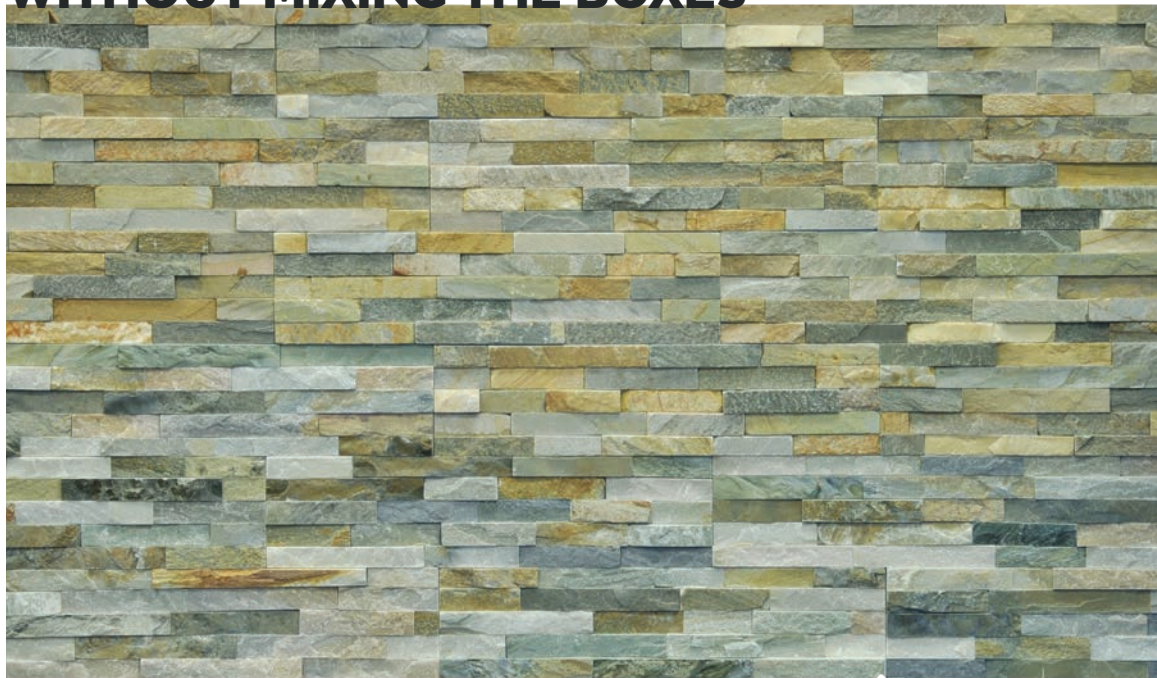


NORWAY

# NATURAL STONE COLOR VARIATION

Natural Stone is a beautiful and unique product of nature, which is characterized by distinctive variations in tone and color. These natural variations in color and grain are not flaws, but are a part of the natural beauty and uniqueness of stone. These inherent variations should be expected and serve to enhance the natural beauty and endless charm.

## WITHOUT MIXING THE BOXES



## WITH THE BOXES MIXED



# CORNERS EXAMPLES

IMPEX | [www.impexstones.com](http://www.impexstones.com)

## BRICK VENEER COLLECTION



**AFRICA**



**OLD MONTREAL**

## STONE VENEER COLLECTION



**LONDON**  
STONE VENEER COLLECTION



**BEIGE RIDGE**  
STONE VENEER COLLECTION

## NATURAL STONES COLLECTION



**BALTIC**  
CONTEMPORARY COLLECTION  
MARBLE CORNER



**MACKENZIE**  
TRENDY COLLECTION  
45 DEGREE CUT



**RENAISSANCE**  
MASONRY NATURAL STONE  
COLLECTION



**BLACK QUARTZITE**  
TRENDY COLLECTION



**KENORA**  
OUTDOOR COLLECTION



# BUY PEACE OF MIND WITH WITH LTC !

*LTC mortar adhesive have been specially designed for Impex products.*

THE USE OF LTC MORTAR ADHESIVE GUARANTEES YOUR INSTALLATION IF IT HAS BEEN CARRIED OUT ACCORDING TO STANDARDS ESTABLISHED BY THE INDUSTRY.



## WARNING

Specialized adhesive cements for installing wall tiles or ceramic are not suitable for laying stone on the wall. The use of these specialized mortars could result in cracks in the products.





BALTIC



PALERMO



BALTIC 3D

# NATURAL STONES

IMPEX | www.impexstones.com

## CONTEMPORARY COLLECTION

Baltic



Baltic 3D



Palermo



Virginia



35

## SPECIFICATIONS

PRODUCTS	PER BOX	CORNERS/BOX	HEIGHT	LENGTH	THICKNESS	CORNERS	WEIGHT	ADHESIVE	NOTES	
Baltic	6 stones 5.8 sq.ft 0.54 m <sup>2</sup> /box	6 corners 2 pieces = 1 corner 3.0 lin.ft (5.8 sq.ft)/box	5 7/8"	23 5/8"	3/8" to 3/4"	5 7/8" x 5 7/8" and 5 7/8" x 17 3/4"	48 boxes/ skid ± 50 lbs/box	INT. LTC	EXT. No	Follow manufacturer's instruction according to installation type.  Guaranteed with Impex adhesive products.  <b>Warning:</b> The use of a sealer will emphasize the veinings of the stone.  Preliminary tests are recommended prior to using on porous decorative materials such as marble and other natural stones (prevent staining).  Choose White LTC for marble stone.
Baltic 3D Tile	8 stones 7.75 sq.ft 0.72 m <sup>2</sup> /box	No corner				3/8" to 5/8"				
Palermo	9 stones 5.16 sq.ft 0.48 m <sup>2</sup> /box	9 corners 2 pieces = 1 corner 4.5 lin.ft (5.16 sq.ft)/box	13 3/4"	3/8" to 3/4"	5 7/8" x 5 7/8" and 5 7/8" x 7 7/8"	70 boxes/ skid ± 30 lbs/box				
Virginia	6 stones (2x of each size) 3.88 sq.ft 0.36 m <sup>2</sup> /box	No corner	5 7/8" 4" & 2"	23 5/8"	1/2" and 3/4"	No corner	72 boxes/ skid ± 25 lbs/box			

Before installation, **always visit** the documentations section at [www.impexstones.com](http://www.impexstones.com) for up-to-date installation guides.  
INT = Interior installation | EXT = Outdoor installation | LTC = LTC Mortar adhesive, [white](#) or [grey](#) | MB = Mason Bond



ALPINE



B-TREND



CINDERELLA

# NATURAL STONES

IMPEX | www.impexstones.com

## TRENDY COLLECTION



Alpine



B-Trend



Cinderella



Ice Grey



Mont Blanc



Steel

## SPECIFICATIONS

PRODUCTS	PER BOX	CORNERS/BOX	HEIGHT	LENGTH	THICKNESS	CORNERS	WEIGHT	ADHESIVE	NOTES
Alpine	6 stones 5.8 sq.ft 0.54 m <sup>2</sup> /box	6 corners 2 pieces = 1 corner 3.0 lin.ft (5.8 sq.ft)/box	5 7/8"	23 5/8"	3/8" to 3/4"	5 7/8" x 5 7/8" and 5 7/8" x 17 3/4"	28 boxes/ skid ± 43 lbs/box	INT. LTC	Follow manufacturer's instruction according to installation type.  Guaranteed with Impex adhesive products.
B-Trend	7 stones 4.74 sq.ft 0.44 m <sup>2</sup> /box	No corner	7 1/8"	13 3/4"		No corner	60 boxes/ skid ± 40 lbs/box		
Cinderella	7 stones 6.7 sq.ft 0.62 m <sup>2</sup> /box	7 corners 2 pieces = 1 corner 3.5 lin.ft (6.7 sq.ft)/box	5 7/8"	23 5/8"		5 7/8" x 5 7/8" and 5 7/8" x 17 3/4"	48 boxes/ skid ± 60 lbs/box	EXT. MB	
Ice Grey	6 stones 5.8 sq.ft 0.54 m <sup>2</sup> /box	6 corners 2 pieces = 1 corner 3.0 lin.ft (5.8 sq.ft)/box					48 boxes/ skid ± 40 lbs/box		
Mont Blanc							28 boxes/ skid ± 40 lbs/box	EXT. MB	
Steel					28 boxes/ skid ± 40 lbs/box				

Before installation, **always visit** the documentations section at [www.impexstones.com](http://www.impexstones.com) for up-to-date installation guides.

INT = Interior installation | EXT = Outdoor installation | LTC = LTC Mortar adhesive, white or grey | MB = Mason Bond \* = indoor and outdoor installation



MACKENZIE



BLACK QUARTZITE

# NATURAL STONES

IMPEX | www.impexstones.com

## TRENDY COLLECTION

Nebula



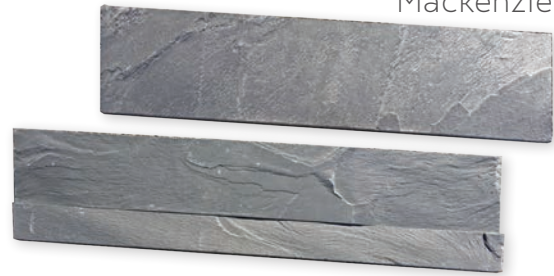
Niagara



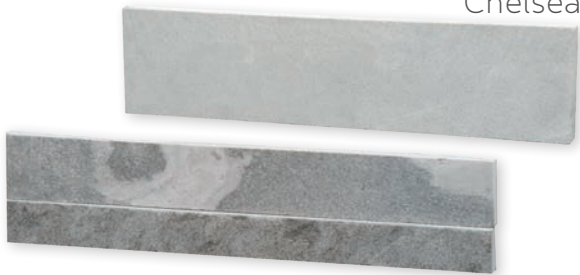
Black Quartzite



Mackenzie



Chelsea



Venetian



## SPECIFICATIONS

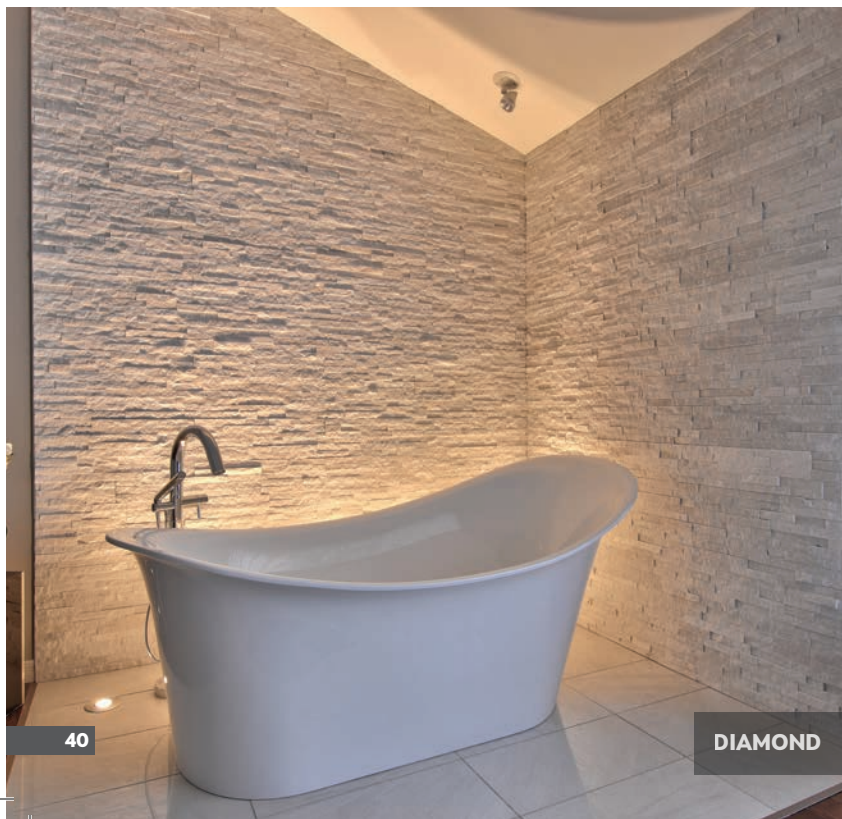
PRODUCTS	PER BOX	CORNERS/BOX	HEIGHT	LENGTH	THICKNESS	CORNERS	WEIGHT	ADHESIVE		NOTES
Nebula	6 stones 5.8 sq.ft 0.54 m <sup>2</sup> /box	No corner	5 7/8"	23 5/8"	3/8" to 3/4"	No corner	40 boxes/ skid ± 48 lbs/box	INT. LTC	EXT. No	Follow manufacturer's instruction according to installation type.  Guaranteed with Impex adhesive products.  <b>Mackenzie:</b> the use of a sealer is recommended for additional protection.
Niagara	7 stones 6.7 sq.ft 0.63 m <sup>2</sup> /box						48 boxes/ skid ± 50 lbs/box			
Black Quartzite	7 stones 6.7 sq.ft 0.63 m <sup>2</sup> /box	7 corners 2 pieces = 1 corner 3.5 lin.ft (6.7 sq.ft)/box			3/8" to 1 1/2"	5 7/8" x 5 7/8" and 5 7/8" x 17 3/4"	48 boxes/ skid ± 55 lbs/box	EXT. MB		
Mackenzie	6 stones 5.8 sq.ft 0.54 m <sup>2</sup> /box	No corner	4 7/8"	3/8" to 1 1/8"	No corner	48 boxes/ skid ± 50 lbs/box	INT. LTC	EXT. No		
Chelsea	6 stones 4.84 sq.ft 0.45 m <sup>2</sup> /box			3/8" to 3/4"		33 boxes/ skid ± 40 lbs/box				
Venetian										

Before installation, **always visit** the documentations section at [www.impexstones.com](http://www.impexstones.com) for up-to-date installation guides.

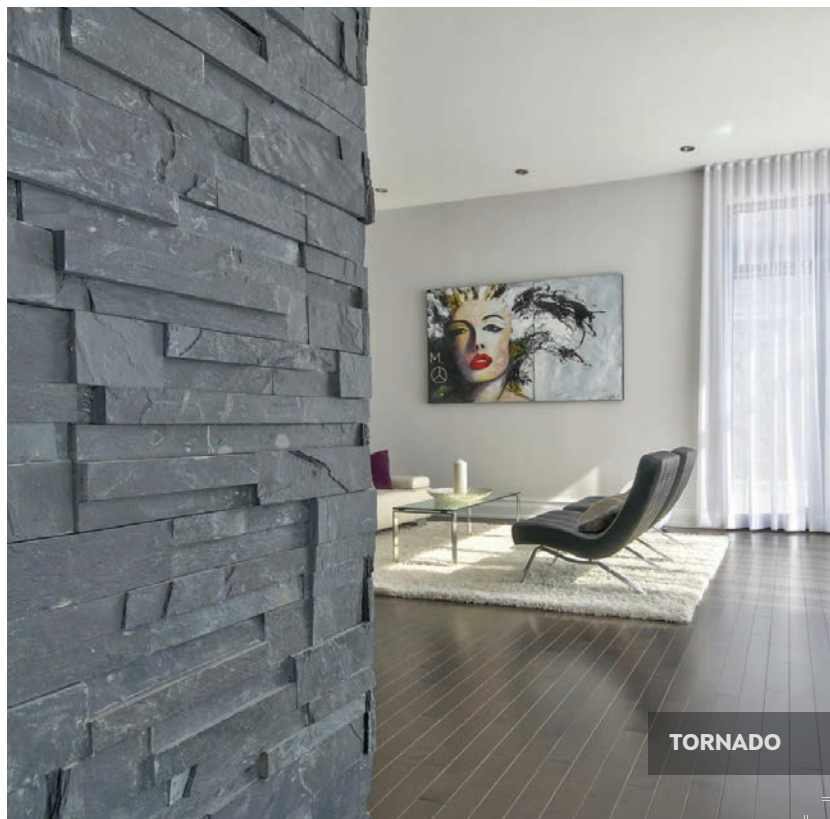
INT = Interior installation | EXT = Outdoor installation | LTC = LTC Mortar adhesive, [white] or [grey] | MB = Mason Bond \* = indoor and outdoor installation



VOLCANO



DIAMOND



TORNADO



# NATURAL STONES

IMPEX | www.impexstones.com

## CLASSICAL COLLECTION

Diamond



Groove



Mediterranean



Tornado



Volcano



## SPECIFICATIONS

PRODUCTS	PER BOX	CORNERS/BOX	HEIGHT	LENGTH	THICKNESS	CORNERS	WEIGHT	ADHESIVE		NOTES
Diamond	7 stones 6.7 sq.ft 0.63 m <sup>2</sup> /box	7 corners 2 pieces = 1 corner 3.5 lin.ft (6.7 sq.ft)/box	5 7/8"	23 5/8"	3/8" to 1/2"	5 7/8" x 5 7/8" and 5 7/8" x 17 3/4"	48 boxes/ skid ± 50 lbs/box	INT. LTC	EXT. No	Follow manufacturer's instruction according to installation type.  Guaranteed with Impex adhesive products.  <b>Volcano:</b> If installed outdoor, use a sealer to delay oxidation of the stone.  <b>Tornado:</b> the use of a sealer is recommended for additional protection.
Groove	8 stones 3.87 sq.ft 0.36 m <sup>2</sup> /box	No corner		11 7/8"	3/8" to 3/4"	No corner	60 boxes/ skid ± 30 lbs/box			
Mediterranean					1/4" to 1"		48 boxes/ skid ± 50 lbs/box		EXT. MB	
Tornado	6 stones 5.8 sq.ft 0.54 m <sup>2</sup> /box	6 corners 2 pieces = 1 corner 3.0 lin.ft (5.8 sq.ft)/box	5 7/8"	23 5/8"	3/8" to 3/4"	5 7/8" x 5 7/8" and 5 7/8" x 17 3/4"	64 boxes/ skid ± 45 lbs/box	INT. LTC	EXT. No	
Volcano							48 boxes/ skid ± 50 lbs/box		EXT. MB	

Before installation, **always visit** the documentations section at [www.impexstones.com](http://www.impexstones.com) for up-to-date installation guides.

INT = Interior installation | EXT = Outdoor installation | LTC = LTC Mortar adhesive, white or grey | MB = Mason Bond \* = indoor and outdoor installation



SABLON



ECLIPSE

# NATURAL STONES

IMPEX | [www.impexstones.com](http://www.impexstones.com)

## ECONOMICAL COLLECTION

Eclipse



Sablon 



## SPECIFICATIONS

PRODUCTS	PER BOX	CORNERS/BOX	HEIGHT	LENGTH	THICKNESS	CORNERS	WEIGHT	ADHESIVE		NOTES
Eclipse	7 stones 6.78 sq.ft 0.63 m <sup>2</sup> /box	No corner	5 7/8"	23 5/8"	3/8" to 3/4"	No corner	64 boxes/ skid ± 40 lbs/box		EXT. No	Follow manufacturer's instruction according to installation type.  Guaranteed with Impex adhesive products.  <b>Eclipse:</b> the use of a sealer is recommended for additional protection
								INT. LTC		
Sablon	8 stones 7.75 sq.ft 0.72 m <sup>2</sup> /box						48 boxes/ skid ± 50 lbs/box		EXT. MB	

Before installation, **always visit** the documentations section at [www.impexstones.com](http://www.impexstones.com) for up-to-date installation guides.

INT = Interior installation | EXT = Outdoor installation | LTC = LTC Mortar adhesive, white or grey | MB = Mason Bond  = indoor and outdoor installation



GIBRALTAR



# NATURAL STONES

IMPEX | [www.impexstones.com](http://www.impexstones.com)

## ECONOMICAL COLLECTION

Autumn



Avorio



Bianco



Charcoal



Gibraltar



Spring



## SPECIFICATIONS

PRODUCTS	PER BOX	CORNERS/BOX	HEIGHT	LENGTH	THICKNESS	CORNERS	WEIGHT	ADHESIVE	NOTES		
Autumn	8 stones 5.42 sq.ft 0.50 m <sup>2</sup> /box	No corner	7 1/8"	13 3/4"	3/8" to 3/4"	No corner	70 boxes/ skid ± 30 lbs/box	INT. LTC	EXT. MB		
Avorio	9 stones 6.1 sq.ft 0.57 m <sup>2</sup> /box						64 boxes/ skid ± 45 lbs/box	INT. LTC	No	Follow manufacturer's instruction according to installation type.  Guaranteed with Impex adhesive products.  <b>Charcoal:</b> the use of a sealer is recommended for additional protection.	
Bianco	8 stones 5.42 sq.ft 0.50 m <sup>2</sup> /box						64 boxes/ skid ± 40 lbs/box				
Charcoal	7 stones 4.76 sq.ft 0.44 m <sup>2</sup> /box						48 boxes/ skid ± 30 lbs/box				
Gibraltar	9 stones 6.1 sq.ft 0.57 m <sup>2</sup> /box						varied nbrs/ skid ± 40 lbs/box	INT. LTC			EXT. MB
Spring	8 stones 5.42 sq.ft 0.50 m <sup>2</sup> /box						70 boxes/ skid ± 30 lbs/box				

Before installation, **always visit** the documentations section at [www.impexstones.com](http://www.impexstones.com) for up-to-date installation guides.

INT = Interior installation | EXT = Outdoor installation | LTC = LTC Mortar adhesive, white or grey | MB = Mason Bond \* = indoor and outdoor installation



ORION

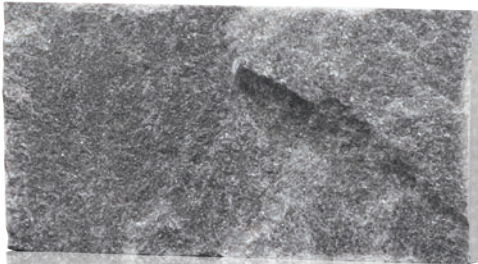


# NATURAL STONES

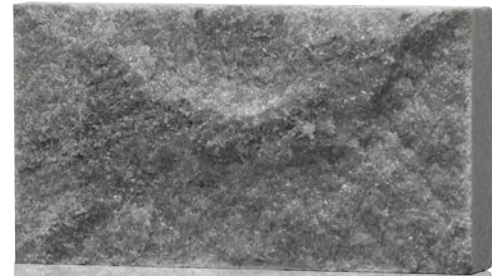
IMPEX | [www.impexstones.com](http://www.impexstones.com)

## EVOLUTION COLLECTION

Orion



Nova



Sky



## SPECIFICATIONS

PRODUCTS	PER BOX	CORNERS/BOX	HEIGHT	LENGTH	THICKNESS	CORNERS	WEIGHT	ADHESIVE	NOTES
Orion	24 stones 5.16 sq.ft 0.48 m <sup>2</sup> /box	No corner	4"	7 7/8"	3/8" to 3/4"	No corner	60 boxes/ skid ± 35 lbs/box	INT. LTC	Follow manufacturer's instruction according to installation type.  Guaranteed with Impex adhesive products.
Nova								EXT. No	
Sky								INT. LTC	

Before installation, **always visit** the documentations section at [www.impexstones.com](http://www.impexstones.com) for up-to-date installation guides.

INT = Interior installation | EXT = Outdoor installation | LTC = LTC Mortar adhesive, white or grey | MB = Mason Bond \* = indoor and outdoor installation



SAVOY



HALIFAX



YELLOWKNIFE



# NATURAL STONES

IMPEX | www.impexstones.com

## OUTDOOR COLLECTION



## SPECIFICATIONS

PRODUCTS	PER BOX	CORNERS/BOX	HEIGHT	LENGTH	THICKNESS	CORNERS	WEIGHT	ADHESIVE		NOTES
Halifax	3 stones 3.55 sq.ft 0.33 m <sup>2</sup> /box	Sold individually Approximately 1.07 sq.ft 8 LI	7 7/8"	21 5/8"	3/4" to 1 1/2"	7 7/8" x 8" and 7 7/8" x 13 3/4"	36 boxes/ skid ± 49 lbs/box	INT. LTC	EXT. MB	Follow manufacturer's instruction according to installation type.  Guaranteed with Impex adhesive products.  Mortar quantity: 20 to 30 sq.ft.
Kenora										
Nevada										
Savoy										
Yellowknife										

Before installation, **always visit** the documentations section at [www.impexstones.com](http://www.impexstones.com) for up-to-date installation guides.

INT = Interior installation | EXT = Outdoor installation | LTC = LTC Mortar adhesive, white or grey | MB = Mason Bond \* = indoor and outdoor installation



STRASBOURG



BRAZILIA

# NATURAL STONES

IMPEX | [www.impexstones.com](http://www.impexstones.com)

## ALTERNATIVE MASONRY COLLECTION

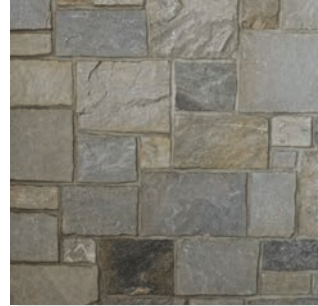
Brazilia



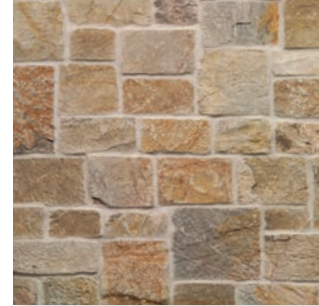
Bahamas



Delani



Frankfort



**NEW**

Madrid



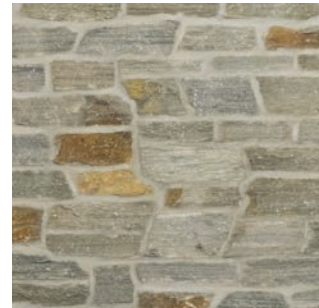
Norway



Renaissance



Strasbourg



## SPECIFICATIONS

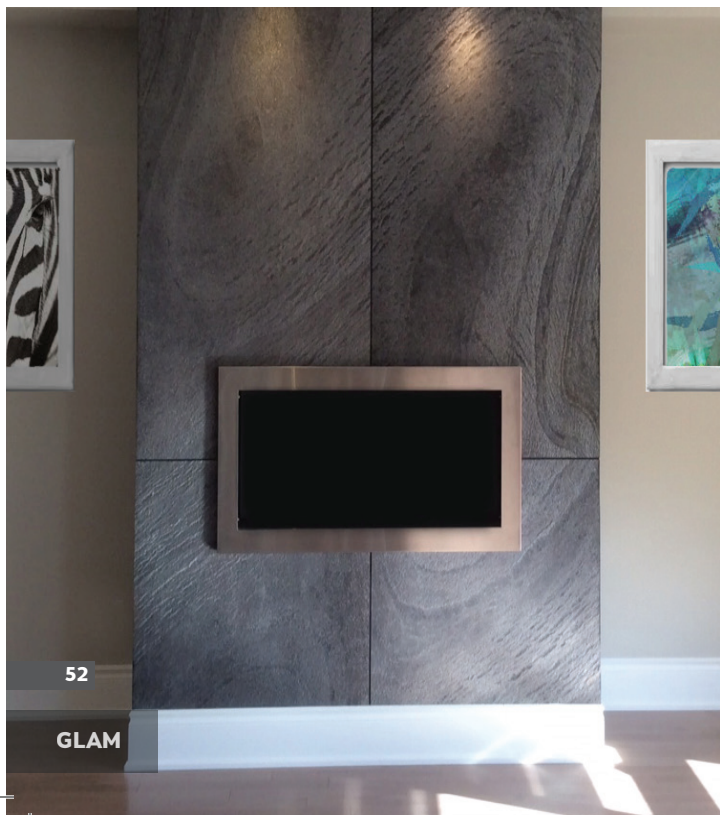
PRODUCTS	PER SQ.FT.	CORNERS/SQ.FT.	HEIGHT	LENGTH	THICKNESS	CORNERS	WEIGHT	ADHESIVE		NOTES
Brazilia	Stones/box: Random  Sold per square foot	1 corner covers an average of 0.6 sq.ft	2 to 8"	6 to 18"	1" to 2"	Random	± 11 lbs/ sq.ft	<b>INT.</b> LTC	<b>EXT.</b> MB	<p>Follow manufacturer's instruction according to installation type.</p> <p>Guaranteed with Impex adhesive products.</p> <p>One bag of mortar adhesive covers 25 to 35 sq.ft depending on the width of the joints.</p> <p>Calculate a 10% loss in the surface calculation.</p>
Bahamas										
Delani										
Frankfort										
Madrid										
Norway										
Renaissance										
Strasbourg										

Before installation, **always visit** the documentations section at [www.impexstones.com](http://www.impexstones.com) for up-to-date installation guides.

INT = Interior installation | EXT = Outdoor installation | LTC = LTC Mortar adhesive, white or grey | MB = Mason Bond \* = indoor and outdoor installation



FIOR



52

GLAM



PALACIO

# LAMINATED NATURAL STONES

IMPEX | www.impexstones.com

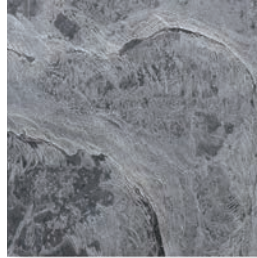
## LAMSTONE COLLECTION

It is possible to choose the sheets at the warehouse. Add 15% to the price.

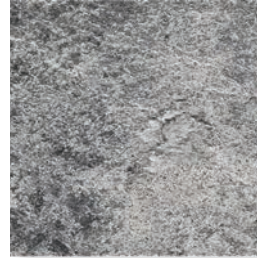
Boston



Fior



Glam



NEW

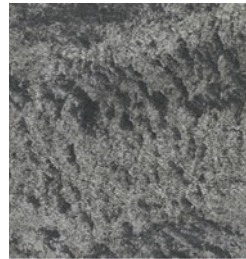
Ivory



Jura



Metal



NEW

Misty



Palacio



Tiffany

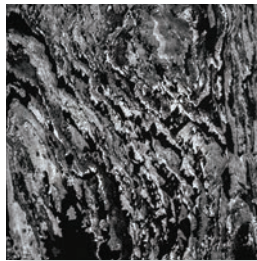


## TRANSLUCENT LAMSTONE

Translucent Boston



Translucent Fior



Translucent Glam



Translucent Victoria



53

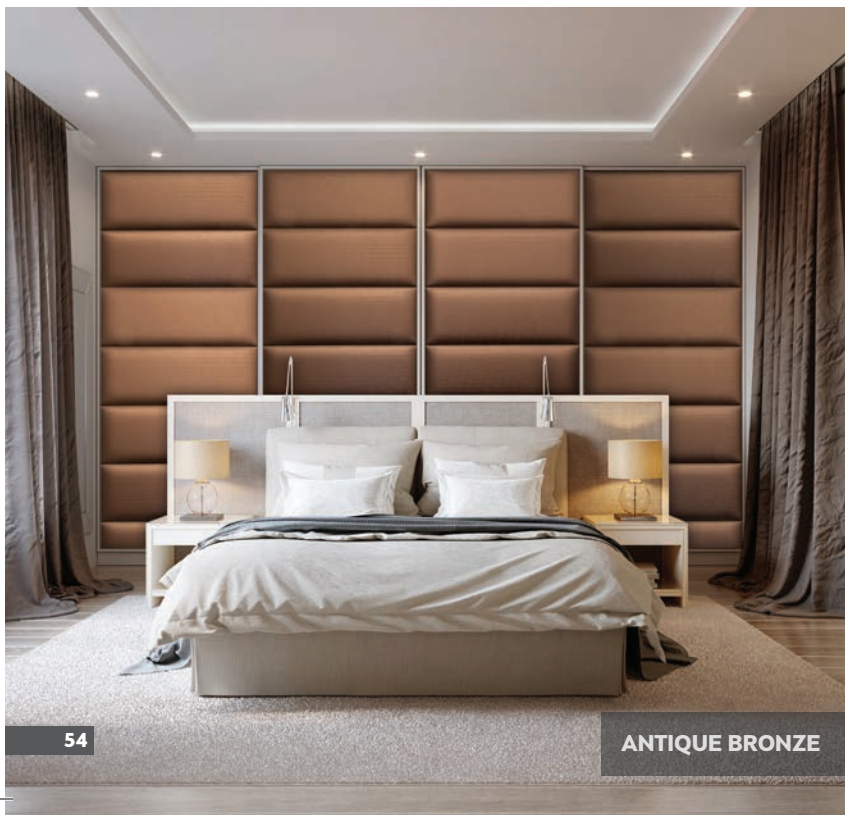
## SPECIFICATIONS

PRODUCTS	PER BOX	HEIGHT	LENGTH	THICKNESS	CORNERS	WEIGHT	ADHESIVE	NOTES	
Boston	10 sheets  <b>No. 1:</b> ± 7.75 sq.ft./sheet  <b>No. 2:</b> ± 21.53 sq.ft./sheet	<b>No. 1:</b> Approx. 24" (60 cm)  <b>No. 2:</b> Approx. 40" (100 cm)	<b>No. 1:</b> Approx. 48" (120 cm)  <b>No. 2:</b> Approx. 80" (200 cm)	2-4 mm	No corner	<b>No. 1:</b> 3 lbs  <b>No. 2:</b> 6 lbs	INT. AC 0055	EXT. No	Follow manufacturer's instruction according to installation type. Guaranteed with Impex adhesive products.  <b>No.2 size:</b> Shipped on a special skid 8'x4'. Will be added on the invoice. See price list.  <b>Important:</b> This product cannot be installed near an intense heat source. See your fireplace specifications. No wood fireplace. To install in a shower, refer to the waterproof membrane manufacturer.
Fior									
Glam									
Ivory									
Jura									
Metal									
Misty									
Palacio									
Tiffany									
Translucent Boston									
Translucent Fior									
Translucent Glam									
Translucent Victoria									

Before installation, **always visit** the documentations section at [www.impexstones.com](http://www.impexstones.com) for up-to-date installation guides  
AC0055 = AC0055 adhesive.



PURE CREAM



ANTIQUÉ BRONZE



EBONY BLACK

# WALL PANELS

IMPEX | [www.impexstones.com](http://www.impexstones.com)

## WALL PANEL KIT COLLECTION

### EASY TO INSTALL IN LESS THAN 10 MINUTES

All the necessary equipment is in the box (screw and template)!  
*Tiles covered with commercial fabrics.*



Antique Bronze



Sumptuous Grey



Ebony Black



Pure Cream

## SPECIFICATIONS

PRODUCTS	PER BOX	CORNERS/BOX	HEIGHT	LENGTH	THICKNESS	CORNERS	WEIGHT	ADHESIVE	NOTES
Antique Bronze	4 panels 10.70 sq.ft 1.15 m <sup>2</sup> /box	No corner	12"	32"	1 1/4"	No corner	27 boxes/skid* ± 20 lbs/box *Can vary	<b>INT.</b> Screw and template provided in the box.  <b>EXT.</b> No	Follow manufacturer's instruction according to installation type.  Guaranteed with Impex adhesive products.  <b>Installation:</b> Screw and template provided in the box.
Sumptuous Grey									
Ebony Black									
Pure Cream									

Before installation, **always visit** the documentations section at [www.impexstones.com](http://www.impexstones.com) for up-to-date installation guides.



ORBIT





# METAL TILES

IMPEX | [www.impexstones.com](http://www.impexstones.com)

## METAL COLLECTION

Orbit



## SPECIFICATIONS

PRODUCTS	PER BOX	CORNERS/BOX	HEIGHT	LENGTH	THICKNESS	CORNERS	WEIGHT	ADHESIVE		NOTES
Orbit	Sold by the tile	No corner	23 3/4"	23 3/4"	1/32"	No corner	± 1 lbs/sq.ft	INT. AC 0055	EXT. No	<p>Follow manufacturer's instruction according to installation type.</p> <p>Guaranteed with Impex adhesive products.</p> <p>Significant variation in rust tints.</p> <p>Do not install near the heat sources or humid environment.</p>

Before installation, **always visit** the documentations section at [www.impexstones.com](http://www.impexstones.com) for up-to-date installation guides  
AC0055 = AC0055 adhesive



AVALANCHE



AFRICA



DEVON

# BRICK VENEER

www.impexstones.com

## BRICK VENEER COLLECTION

Indoor installation only.

Africa



Albinos



Avalanche



Devon



Kingston



## SPECIFICATIONS

PRODUCTS	PER BOX	CORNERS/BOX	HEIGHT	LENGTH	THICKNESS	CORNERS	WEIGHT	ADHESIVE	NOTES
Africa	10.76 sq.ft 1 m <sup>2</sup> /box	«L» Shape 9.0 lin.ft (4.8 sq.ft)/box	2 1/2"	7 1/2"	1/2"	5 3/4"x2"	44 boxes/ skid ± 35 lbs/box	INT. LTC	Follow manufacturer's instruction according to installation type..  Guaranteed with Impex adhesive products.  <b>Suggested grout color:</b> Africa: cream; Albinos: white; Avalanche: white; Devon: grey; Kingston: grey.  <b>1-1-6 mortar coverage:</b> 45 to 50 sq.ft
Albinos		No corner	2 1/4"	8"	3/8"	No corner	45 boxes/ skid ± 30 lbs/box	INT. LTC	
Avalanche		«L» Shape 9.0 lin.ft (4.8 sq.ft)/box	2 1/2"	7 1/2"	1/2"	5 3/4"x2"	44 boxes/ skid ± 35 lbs/box	EXT. No	
Devon		No corner	2 3/8"	7 3/8"	1/2" to 3/4"	No corner	44 boxes/ skid ± 40 lbs/box	INT. LTC	
Kingston		«L» Shape 9.0 lin.ft (4.8 sq.ft)/box	2 1/2"	7 1/2"	1/2"	6 1/2"x2" and 2 1/2"x1/2"	44 boxes/ skid ± 35 lbs/box	INT. LTC	

Before installation, **always visit** the documentations section at [www.impexstones.com](http://www.impexstones.com) for up-to-date installation guides.  
 INT = Interior installation | EXT = Outdoor installation | LTC = LTC Mortar adhesive, white or grey | MB = Mason Bond



ST-CHARLES



# BRICK VENEER

www.impexstones.com

## BRICK VENEER COLLECTION

Indoor installation only

Manchester



Nocturn



Clay brick



Old Bank

Clay brick



St-Charles

Old Montreal



Old Quebec



## SPECIFICATIONS

PRODUCTS	PER BOX	CORNERS/BOX	HEIGHT	LENGTH	THICKNESS	CORNERS	WEIGHT	ADHESIVE	NOTES
Manchester	10.76 sq.ft 1 m <sup>2</sup> /box	No corner	2 3/8"	7 3/8"	1/2" to 3/4"	No corner	44 boxes/ skid ± 40 lbs/box	INT. LTC EXT. No	Follow manufacturer's instruction according to installation type.  Guaranteed with Impex adhesive products.  <b>Suggested grout color:</b> Grey.  <b>1-1-6 mortar coverage:</b> 45 to 50 sq.ft  Old clay bricks could break in the box. Use broken pieces in your wall design to add realism and authenticity.
Nocturn			2 1/4"	8"	1/2"		45 boxes/ skid ± 30 lbs/box		
Old Bank	7.5 sq.ft 0.7 m <sup>2</sup> /box	«L» Shape 4.25 lin.ft (3.72 sq.ft)/box	2 1/4"	9 1/4"	3/4" to 1"	Size may vary 8 1/2" x 2 1/4" and 2 1/4" x 1"	24 or 60 boxes/skid ± 45 lbs/box		
St-Charles									
Old Montreal	10.76 sq.ft 1 m <sup>2</sup> /box	«L» Shape 9.0 lin.ft (4.8 sq.ft)/box	2 1/2"	7 1/2"	1/2"	5 3/4"x2"	44 boxes/ skid ± 35 lbs/box		
Old Quebec			2 1/2"	8 3/4"					

Before installation, **always visit** the documentations section at [www.impexstones.com](http://www.impexstones.com) for up-to-date installation guides.  
INT = Interior installation | EXT = Outdoor installation | LTC = LTC Mortar adhesive, white or grey | MB = Mason Bond



BEIGE RIDGE



62

LIVERPOOL



LONDON

# STONE VENEER

IMPEX | [www.impexstones.com](http://www.impexstones.com)

## STONE VENEER COLLECTION

Dublin



Liverpool



London



Beige Ridge



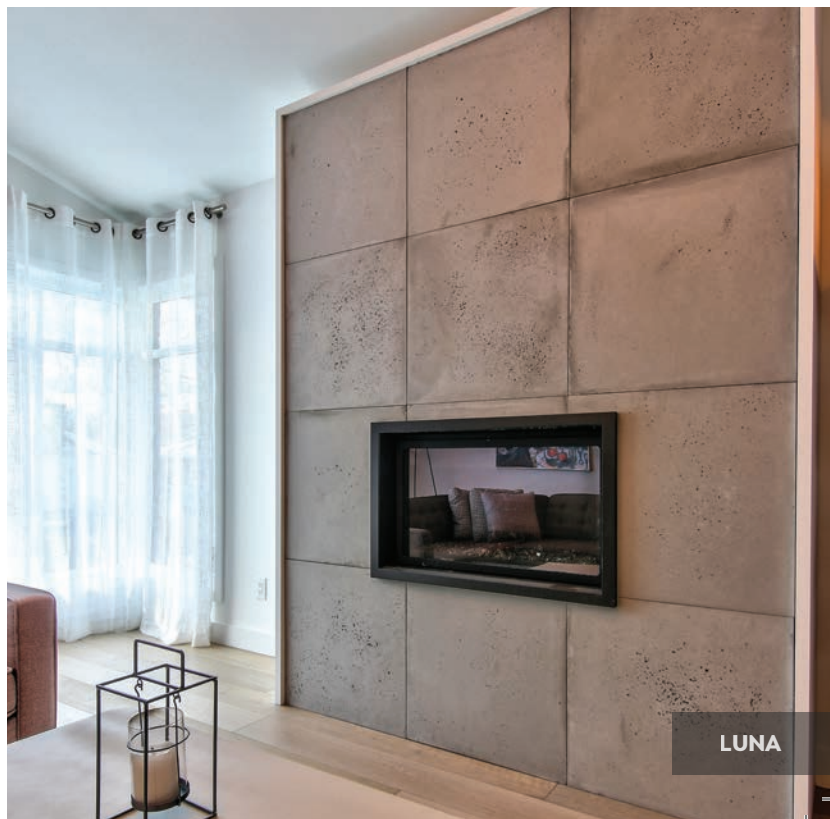
White Ridge



## SPECIFICATIONS

PRODUCTS	PER BOX	CORNERS/BOX	HEIGHT	LENGTH	THICKNESS	CORNERS	WEIGHT	ADHESIVE	NOTES
Dublin	21 stones (7 of each size) 7.5 sq.ft 0.7 m <sup>2</sup> /box	No corner	4"	19 3/4"	3/7" to 2" 3/4" to 2" 3/4" to 2"	No corner	24 boxes/ skid ± 58 lbs/box	INT. LTC	Follow manufacturer's instruction according to installation type.  Guaranteed with Impex adhesive products.  <b>Beige and White Ridge:</b> Can be installed with or without joints.
Liverpool				11 7/8"					
London	24 stones (8 of each size) 8.6 sq.ft 0.8 m <sup>2</sup> /box	32 corners 2 sizes of «L» shape corners 10 lin.ft (7.5 sq.ft)/box	19 3/4"	1" to 2"	9 1/4" x 5 1/2" and 1 3/8" x 1"	24 boxes/ skid ± 70 lbs/box	INT. LTC	EXT. No	
Beige Ridge	22 stones Random size 8 sq.ft 0.74 m <sup>2</sup> /box	26 corners «L» shape corners 7.4 lin.ft (5.61 sq.ft)/box	2" to 6 5/8"	5" to 17 1/2"	3/4" to 1 1/2"	3 1/2" to 9" x 2" to 6 5/8" and 3 1/2" to 7 7/8" x 2" to 6 5/8"	20 boxes/ skid ± 68 lbs/box	INT. LTC	
White Ridge							INT. LTC		

Before installation, **always visit** the documentations section at [www.impexstones.com](http://www.impexstones.com) for up-to-date installation guides.  
INT = Interior installation | EXT = Outdoor installation | LTC = LTC Mortar adhesive, [white](#) or [grey](#) | MB = Mason Bond





# CONCRETE PRODUCTS

IMPEX | [www.impexstones.com](http://www.impexstones.com)

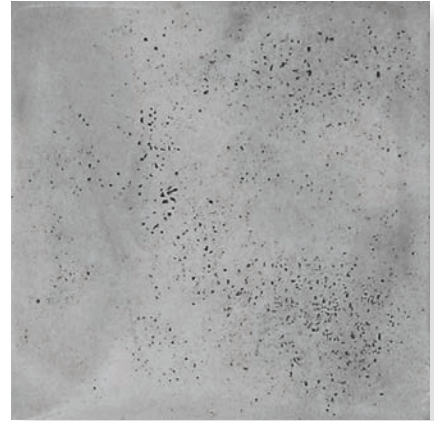
## CONCRETE COLLECTION

Custom-made concrete available for this collection.

Galaxy



Luna



Trinity



Also available without holes.

Some tiles may have a glossy finish while others have a matte finish. No choice can be made between the finishes.

## SPECIFICATIONS

PRODUCTS	PER BOX	CORNERS/BOX	HEIGHT	LENGTH	THICKNESS	CORNERS	WEIGHT	ADHESIVE		NOTES
Galaxy	2 tiles 8 sq.ft 0.74 m <sup>2</sup> /box	No corner	24"	24"	2/3"	No corner	20 boxes/ skid ± 53 lbs/box	INT. LTC	EXT. No	Follow manufacturer's instruction according to installation type.  Guaranteed with Impex adhesive products.  Non-rectified product, tolerance ± 1/8".  <b>Luna, Galaxy and Trinity:</b> Can be installed with or without joints.
Luna										
Trinity	2 panels 8 sq.ft 0.74 m <sup>2</sup> /box		18"	32"	3/4"		37 boxes/ skid ± 45 lbs/box			

Before installation, **always visit** the documentations section at [www.impexstones.com](http://www.impexstones.com) for up-to-date installation guides.  
INT = Interior installation | EXT = Outdoor installation | LTC = LTC Mortar adhesive, [white](#) or [grey](#) | MB = Mason Bond



CHAMPLAIN



DUNHAM

# CONCRETE PRODUCTS

IMPEX | [www.impexstones.com](http://www.impexstones.com)

## CONCRETE PLANKS COLLECTION

Custom-made planks available for this collection

Cartier



Champlain



Dunham



White Vivaldi



67

## SPECIFICATIONS

PRODUCTS	PER BOX	CORNERS/BOX	HEIGHT	LENGTH	THICKNESS	CORNERS	WEIGHT	ADHESIVE	NOTES
Cartier	6 planks 10.65 sq.ft 0.99 m <sup>2</sup> /box	No corner	7 7/8"	31 5/8"	3/4"	No corner	24 boxes/ skid ± 65 lbs/ box	INT. LTC	Follow manufacturer's instruction according to installation type.  Guaranteed with Impex adhesive products.  Non-rectified product. Tolerance ± 1/8".  <b>Vivaldi:</b> This product can be customized with any color and size.  Thickness can vary. No return on this product. Using a sealer will help protect this product.
Champlain								INT. LTC	
Dunham								EXT. No	
White Vivaldi	6 planks 9 sq.ft 0.83 m <sup>2</sup> /box	6"	36"	3/4 and 1 1/4"	20 boxes/ skid ± 65 lbs/ box	INT. Sika Bond			

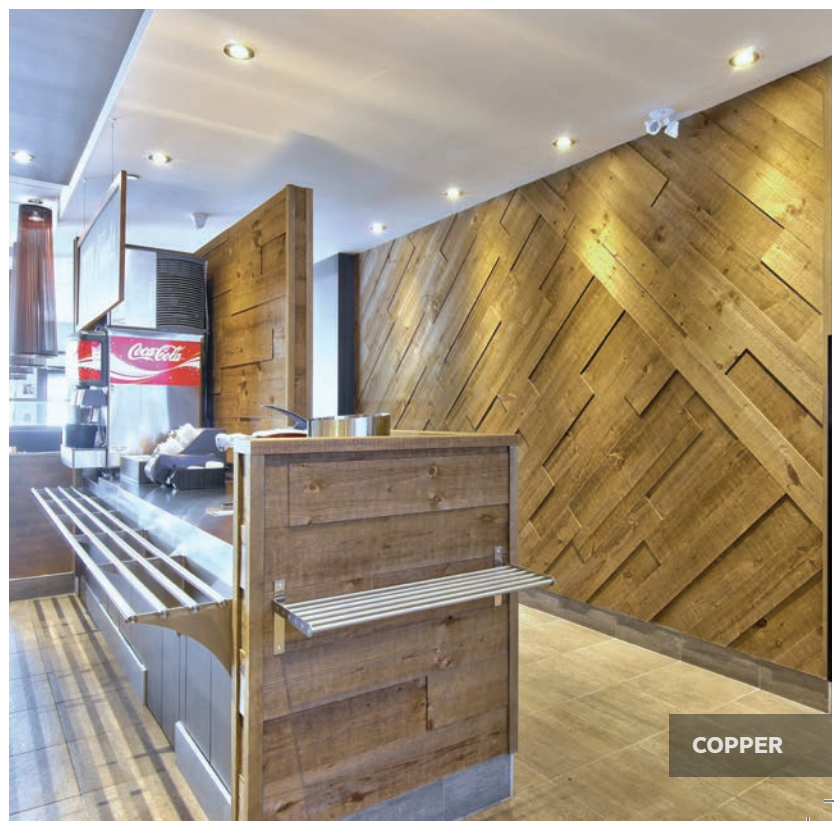
Before installation, **always visit** the documentations section at [www.impexstones.com](http://www.impexstones.com) for up-to-date installation guides.  
INT = Interior installation | EXT = Outdoor installation | LTC = LTC Mortar adhesive, [white](#) or [grey](#) | Sika Bond = Sika Bond adhesive



PEARL



CHROME



COPPER

# WOOD SIDING

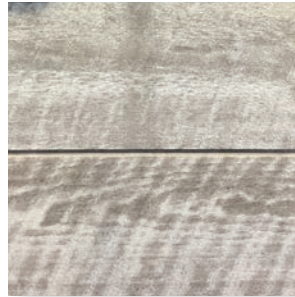
IMPEX | [www.impexstones.com](http://www.impexstones.com)

## 3D WOOD COLLECTION

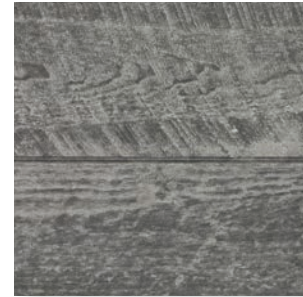
Copper



Lounge Camel



Lounge Chrome



Pearl



Silver



Molding



## SPECIFICATIONS

PRODUCTS	PER BOX	CORNERS/BOX	HEIGHT	LENGTH	THICKNESS	CORNERS	WEIGHT	ADHESIVE		NOTES
Copper	8 planks 17.68 sq.ft./box 1.7 m <sup>2</sup> /box	No corner	6 3/4"	47"	1/2" to 3/4"	No corner	36 boxes/ skid ± 25 lbs/ box	INT. Yes	EXT. No	Follow manufacturer's instruction according to installation type.
Lounge Camel and Lounge Chrome	8 planks in 3 thicknesses 17.6 sq.ft 1.64 m <sup>2</sup> /box		6 3/4"	46 1/2"	1/2", 3/4" and 1"					Guaranteed with Impex adhesive products.
Pearl	8 planks 17.68 sq.ft./box 1.7 m <sup>2</sup> /box		6 3/4"	47"	1/2" to 3/4"					<p><b>Installation:</b> Sika Bond and finishing nails.</p> <p>Leave the wood 24 to 48h in the room where it will be installed.</p> <p>Moldings and touch-up kits available.</p>
Silver	8 planks 17.68 sq.ft./box 1.7 m <sup>2</sup> /box		6 3/4"	47"	1/2" to 3/4"					<p>Moldings are shipped in a special tube. 1 tube holds up to 4 moldings of 8 lin.ft each.</p> <p><b>Lounge Chrome and Lounge Camel:</b> The molding does not fit with 1" thick planks.</p>

Before installation, **always visit** the documentations section at [www.impexstones.com](http://www.impexstones.com) for up-to-date installation guides.  
INT = Interior installation | EXT = Outdoor installation.



LATTÖ DOUBLE WHITE



LATTÖ TERRÖ

# WOOD SIDING

IMPEX | [www.impexstones.com](http://www.impexstones.com)

## LATTÖ COLLECTION

Lattö Double White



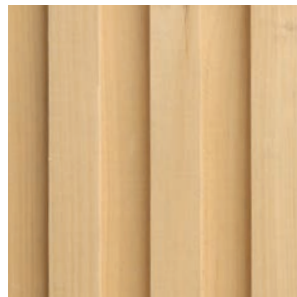
Lattö Ebony



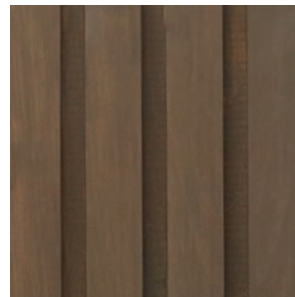
Lattö Lattë



Lattö Natural







Lattö Terrö



71

## SPECIFICATIONS

PRODUCTS	PER BOX	BM COLOR*	HEIGHT	LENGTH	THICKNESS	CORNERS	WEIGHT	ADHESIVE		NOTES
Lattö Double White	6 planks 30 sq.ft./box 2.79 m <sup>2</sup> /box	OC-65 Chantilly Lace 	7 1/2"	96"	1 1/4"	No corner	30 boxes/ skid ± 51 lbs/ box	INT. Yes	EXT. No	<p>Follow manufacturer's instruction according to installation type.</p> <p>Guaranteed with Impex adhesive products.</p> <p><b>*If you need to do any touch-up:</b> All Benjamin Moores offer a small size they call a 236 ml "Test Bottle" for touch-ups.</p> <p><b>Installation:</b> Sika Bond and finishing nails.</p> <p>Leave the wood 24 to 48h in the room where it will be installed.</p>
Lattö Ebony		HC-190 Black 								
Lattö Lattë		993-Beachcomber Matte Finish 								
Lattö Natural		Aucune								
Lattö Terrö		2108-30 Brown Horse 								

Before installation, **always visit** the documentations section at [www.impexstones.com](http://www.impexstones.com) for up-to-date installation guides.  
INT = Interior installation | EXT = Outdoor installation | BM = Benjamin Moores

# ADHESIVE PRODUCTS

## RECOMMENDATIONS FOR THE INSTALLATION OF IMPEX PRODUCTS

	BACKING	ADHESIVE	FEATURES
<b>STONES</b> (DOUBLE STICKING)	<b>Drywall</b> Follow the recommendations of the National Building Code	<b>LTC</b> Indoor only  <b>Sika Bond*</b> Follow the recommendations of the National Building Code <i>*Warning: May stain marble stone or porous stone. Do tests before using this adhesive.</i>	The drywall must be painted and scratched.  The National Building Code recommends using a wire mesh.  3/8 trowel with double sticking except for Outdoor Collection (1/2 with double sticking)
	<b>Lightweight Cement</b> Follow the recommendations of the National Building Code	<b>LTC</b> Indoor only  <b>Mason Bond</b> Outdoor	The joints must be finished with fiberglass tape and mortar.  Using a wire mesh is recommended according to the National Building Code. Mandatory for outdoor installation  3/8 trowel with double sticking except for Outdoor Collection (1/2 with double sticking)
	<b>Wire Mesh</b> Follow the recommendations of the National Building Code	<b>LTC</b> Indoor only  <b>Mason Bond</b> Outdoor	Must be filled with mortar and let dry 24 hours before installation.  3/8 trowel with double sticking except for Outdoor Collection (1/2 with double sticking)
<b>CONCRETE PRODUCTS</b> (DOUBLE STICKING)	<b>Drywall</b> Follow the recommendations of the National Building Code	<b>LTC</b> Indoor only  <b>Sika Bond adhesive</b> For Vivaldi only	The drywall must be painted and scratched.  The National Building Code recommends using a wire mesh.  1/2 trowel with double sticking.
	<b>Lightweight Cement</b> Follow the recommendations of the National Building Code	<b>LTC</b> Indoor only  <b>Sika Bond adhesive</b> For Vivaldi only	The joints must be finished with fiberglass tape and mortar.  Using a wire mesh is recommended.  1/2 trowel with double sticking.
	<b>Wire Mesh</b> Follow the recommendations of the National Building Code	<b>LTC</b> Indoor only  <b>Sika Bond adhesive</b> For Vivaldi only	Must be filled with mortar and let dry 24 hours before installation.  1/2 trowel with double sticking.
<b>WOOD PRODUCTS</b>	All wall surfaces	<b>Sika Bond adhesive</b>  <b>Finishing nails</b>	Touch-up kits available for wood products.
<b>LAMSTONE</b> (DOUBLE STICKING)	All wall surfaces Not on plywood or wood panels.	<b>DURA PRO AC0055</b> Cannot be installed near a wood fireplace or near a direct intense heat source.	Double sticking. V 3/16 trowel on the wall and straight trowel on the back of the product.
<b>DECORATIVE BRICKS</b> (DOUBLE STICKING)	<b>Drywall</b> Follow the recommendations of the National Building Code	<b>LTC</b> Indoor only  <b>Sika Bond</b> Follow the recommendations of the National Building Code.	The drywall must be painted and scratched.  Straight trowel with double sticking.
<b>METAL</b>	All wall surfaces	<b>AC0055 adhesive</b> Simple sticking on the back of the tile.	Apply the adhesive on the back of the tile with a 3/16 V-shaped trowel.



# ACCESSORIES

IMPEX | [www.impexstones.com](http://www.impexstones.com)

## ADHESIVES

DESCRIPTION	ESTIMATED COVERING	FORMAT	COMMENTS
Mortar cone	N/A	N/A	To facilitate the installation of joints.
White King Mortar Cream King Mortar Grey King Mortar Black King Mortar <b>Type N - 116</b>	± 50 sq.ft for brick veneer joints ± 20 sq.ft to 30 sq.ft for masonry joints	30 kg	For joints
LTC Mortar Adhesive	± 40 to 50 sq.ft Outdoor stones: ± 20 to 30 sq.ft	22.7 kg	Available in grey or white for indoor installation.
Mason Bond 400	± 20 to 30 sq.ft	30 kg	Follow manufacturer's instruction according to installation type. Light cement panel or galvanized mesh for other surfaces. Outdoor installation only.
Sika Bond	± 5 sq.ft	300 ml	Good adhesion on most surfaces.
Dura Pro AC0055	± 16 sq.ft with double sticking	950 ml	For Metal tiles and Lamstone sheets.
	± 70 sq.ft with double sticking	3.78 L	



LTC MORTAR ADHESIVE



MORTAR CONE



MASON BOND 400



KING MORTAR



DURAPRO AC0055



SIKA BOND

73

## SEALERS

DESCRIPTION	ESTIMATED COVERING	FORMAT	COMMENTS
Cement Grout Residue remover	Variable depending on the concentration used and the state of the surface to clean.	946 ml	All Impex products, excluding marble and limestone.
Color Enhancer	Between 75 sq.ft and 100 sq.ft	500 ml	Bricks, natural stones, decorative stones and planks, quartzite.
Natural Finish - sealer	Between 75 sq.ft and 100 sq.ft	500 ml	Bricks, natural stones, decorative stones and planks, quartzite.
High Gloss Finish - sealer	Between 75 sq.ft and 100 sq.ft	500 ml	Bricks, natural stones, decorative stones and planks, quartzite.
Molding Touch-Up kit	N/A	250 ml	8 available colors.

\*Technical sheets available at [www.impexstones.com](http://www.impexstones.com).



CEMENT GROUT  
RESIDUE REMOVER



COLOR ENHANCER



NATURAL FINISH



HIGH GLOSS FINISH



**THE GREATEST SPECIALIST  
IN WALL SIDINGS**

PERSONALIZE YOUR WALL ! At Impex you will find the latest trends and classics for all your wall covering needs.

# THE IMPEX SHOP IS ONLINE!

## ONLY AVAILABLE FOR IMPEX RETAILERS!

Login by clicking on [CONNECT HERE](#) on top right of the page.  
If you have forgotten your login information, no problem! Contact customer service at [admin@impexstones.com](mailto:admin@impexstones.com) or 450-973-1732, it will be a pleasure to help you.

After logging in, you will be able to:

- Easily access product specifications;
- Order products;
- Access the inventory;
- Apply discount coupons
- Choose the shipping method: by your carrier, by the consumer or other;
- Access current orders;
- Access all your bills;
- Access special sales;
- Make your requests for returns.

The Impex website also provides access to photos, up-to-date installation guides, videos and frequently asked questions.

ACCESS YOUR IMPEX RETAILER ACCOUNT RIGHT NOW:  
**WWW.IMPEXSTONES.COM**

# INSTALLATION GUIDE

In order to learn as accurately as possible on installation techniques, please visit our website at all times to get access to the latest version of the Installation Guides.

**All Installation Guides are available in the Documentation section.**

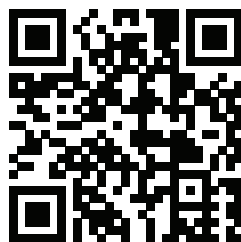
**The installer and the buyer have the responsibility to inspect the products prior to the installation.**

**If the installer doubts the products, the manufacturing or finishing quality and cannot place it in a less conspicuous place, nor eliminate imperfection, he/she should not install it.**

**Once the products are installed, it shall be considered as having been accepted by the installer and the owner even if the latter is absent at the time of installation.**



[www.impexstones.com/en/installation](http://www.impexstones.com/en/installation)



# PURCHASING PROTOCOL

## **ORDER**

All orders must be made on the Web site. A confirmation will be sent within minutes after the order. A period of 2 open days is required for the preparation of your order before delivery/pick-up.

### **BACKORDERS**

If products are backordered, it will be mentioned on the order confirmation. If you want to wait to receive all products at the same time, please send an email to customer service at [info@impexstones.com](mailto:info@impexstones.com).

### **ORDER CANCELLATION OR MODIFICATION**

Please send an email to customer service at [info@impexstones.com](mailto:info@impexstones.com) with your order number and details.

### **RECEPTION OF MERCHANDISE**

Immediate inspection of the merchandise is required before signing the delivery form of your carrier. If items seem to be damaged do not sign the delivery form. Impex will not be responsible for any damage items after the delivery form has been signed. Please confirm the quality of merchandise before giving it to final consumer. Impex will not be responsible for broken merchandise once at consumer address.

## **PICK-UP AND TRANSPORTATION**

Cost of shipping is the responsibility of the client.

Upon request, shipping can be arranged by Impex. 15% administration charge will be added to the invoice.

All handling fees / surcharge coming from the transportation company will be invoiced to the merchant.

For pick-up, please wait for email confirming your order is ready for pick-up before coming to our warehouse.

## **MERCHANDISE RETURN PROTOCOL**

For any return, you must fill the form by clicking the link at the lower right side on the Web site.

Please note that only the customer service department is authorised to process any request for a return. We reserve the right to refuse any returned merchandise that hasn't been pre-approved. Request for a return must be done within 30 days of the invoice date. Return of the merchandise shall be done directly to our warehouse, within 15 days after authorization has been approved. Returns of 2 boxes or less will not be accepted. No return on adhesive products. Return must be done in the original boxes. Boxes must be in perfect condition and complete.

It is the responsibility of the distributor to make sure that any return by one of its customers is done in accordance with the above conditions. All returns will be verified on the arrival. Return must be done in the original boxes. Boxes must be in perfect condition and complete, including the carton box itself. Any merchandise received broken or mixed with stone and corners inside the box, will be refused and no credit will be given. All returns must be returned directly to our warehouse. No returns to the Rosedale warehouses.

Transportation charge of minimum \$65 will be added for returns at Rosedale warehouses plus the 25% restocking fee.

### **RECEPTION OF MERCHANDISE**

Concerning masonry stones, pallets which have been opened for sorting purposes may not be credited according to our assessment of the potential for resale. Ideally, they will be credited with a 50% return shipping fee to cover the handling costs of unpacking, counting and repacking the pallets.

# CALCULATION FORM

IMPEX | www.impexstones.com

## HELP FORM TO CALCULATE THE NUMBER OF BOXES REQUIRED

NOTE: THIS DOCUMENT IS PROVIDED FOR GUIDANCE ONLY

### YOUR PROJECT SIZE

Number of sides or corners	
Height	
Width 1 <sup>st</sup> side	
Width 2 <sup>nd</sup> side	
1 <sup>st</sup> fireplace opening	
2 <sup>nd</sup> fireplace opening	

**IF THERE IS A FIREPLACE:**  
DO NOT FORGET TO DEDUCT  
THE EMPTY SPACE

### 1- HOW TO CALCULATE CORNERS

A - Total linear feet to cover (as per customer design)		A = 16.0
B - Divided by # of lin. ft per box (refer to our technical file)		B = 3.00
C - Requested number of corner boxes		C = 5.33
D - Number of corner boxes to order		D = 6.00
E - Number of sq.ft per boxes (see technical file)		E = 5.8
F - Total of square feet covered by boxes to be ordered		F = 34.8

#### EXAMPLE OF COVERAGE:

Stone: 5.8 sq.ft/box - Corner: 3 lin.ft/box AND 5.8 sq.ft/box

### 2- HOW TO CALCULATE THE STONES

A - Total sq.ft to cover		A = 115
B - Subtract empty spaces in sq.ft		-
C - Tot of sq.ft covered by corner boxes		C = 34.8
D - Remaining square feet to cover (sq.ft of design MINUS total sq.ft covered)		D = 80.2
E - Total sq.ft covered per box (see technical file)		E = 5.8
F - Total of boxes needed to cover remaining square feet (D ÷ E)		F = 13.8
G - Number of boxes to buy		G = 14

### 3- PURCHASES TO BE MADE

Qty of boxes for regular stones (rounded up)		14.0
Qty of boxes for corner stones (rounded up)		6.00

\* Depending on the complexity of the cuts, it is recommended to buy an extra box.

\*\*PLEASE CONTACT US FOR ADDITIONAL ASSISTANCE OR TECHNICAL ISSUES BY PHONE AT 450-973-1732, TOLL FREE AT 1 877-973-1732 OR EMAIL INFO@IMPEXSTONES.COM

SOON...  
**NEW ARRIVALS**  
AT IMPEX!

